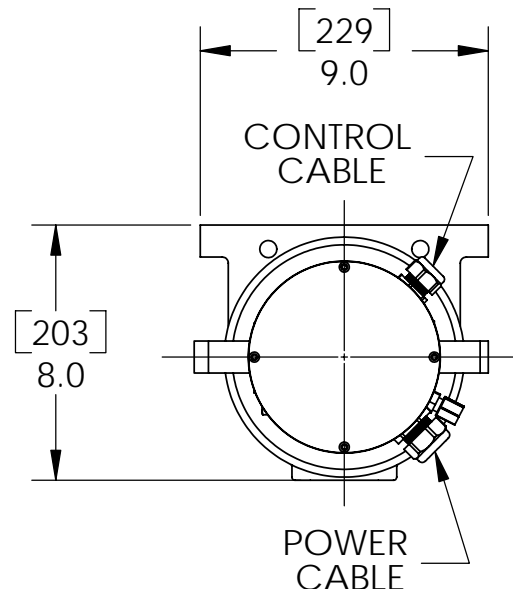
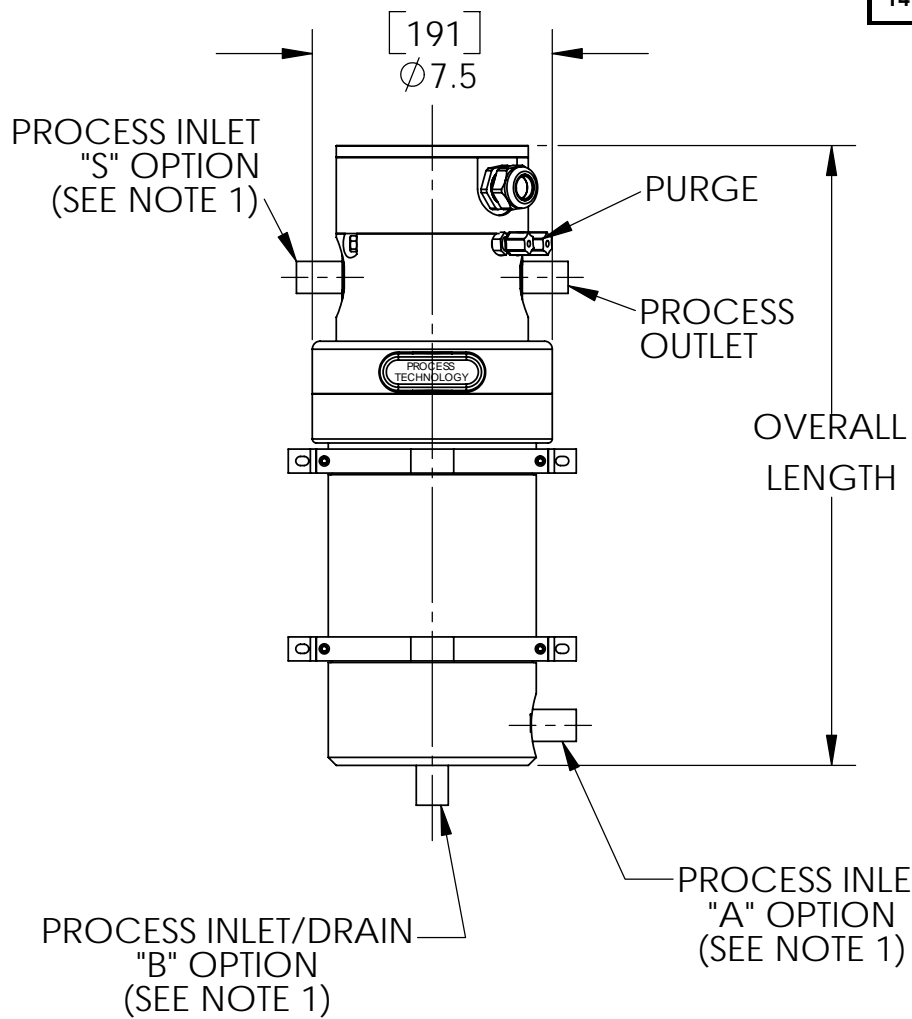


DRAWING NO. 54-0011-5



TIH series	Wattage, kW	Voltage	Phase	Inlet and Outlet Connections	Drain Connection	Plumbing Configuration (drain is assumed center bottom unless option selected)	Process sensor type	Overtemp sensor type	Options
01 - 18	4.5 = 4500kW	1 = 208V	1 or 3	A = 1/2" (12mm) Flared	O (or 0) = No Drain	S = Straight (180° opposed inlet, outlet)	J = Type J thermocouple	E = Type E thermocouple	Blank = No Option
	13.5 = 13,500kW	2 = 240V		B = 3/4" (19mm) Flared	A = 1/2" (12mm) Flared	B = Bottom inlet (center of bottom)	K = Type K thermocouple	K = Type K thermocouple	X## = Longer cord length (inches)
		3 = 380V		C = 1" (25mm) Flared	B = 3/4" (19mm) Flared	A = Bottom-side inlet (Directly below outlet)	R = 1000-Ohm RTD (2-wire)	R = 1000-Ohm RTD (2-wire)	SB = PVDF mounting brackets
		4 = 400V		S = 3/8" (9mm) Flared	S = 3/8" (9mm) Flared				BR = No mounting brackets
		5 = 415V		T = 3/8" (9mm) Super 300 Pillar	T = 3/8" (9mm) Super 300 Pillar				## = Custom design (see eng.)
		6 = 480V		V = 1/2" (12mm) Super 300 Pillar	V = 1/2" (12mm) Super 300 Pillar				
		7 = 440V		W = 3/4" (19mm) Super 300 Pillar	W = 3/4" (19mm) Super 300 Pillar				
		8 = 575V		X = 1" (25mm) Super 300 Pillar	Y = 1/4" (6mm) Super 300 Pillar				
		9 = 220V			Z = 1/4" (6mm) Flared				
		10 = 200V							
		12 = 120V							
		14 = 600V							



KW	OVERALL LENGTH in./(mm)
1	18.1 (460)
2	18.1 (460)
3	18.1 (460)
4.5	26.1 (663)
6	26.1 (663)
9	34.1 (867)
12	34.1 (867)
13.5	40.1 (1019)
18	46.1 (1171)

NOTES:  
 1. FLUID CONNECTION STYLE & LOCATION DETERMINED BY MODEL NUMBER.  
 2. MOUNTING ADAPTERS AVAILABLE FOR RETROFITS.  
 3. 13.5 AND 18KW UNITS INCLUDE 3 MOUNTING BRACKETS. CONSULT FACTORY FOR DETAILS.

APPROVED BY:			PRODUCTION REVIEW:			Q.C. REVIEW:						<b>PROCESSTECHNOLOGY®</b> 7010 LINDSAY DR, MENTOR OH USA (P) 440-946-9500 (F) 440-974-9561 WWW.PROCESS-TECHNOLOGY.COM		
5	DLS	03/14/06	REMOVED WORD DRAIN FROM NOTE POINTING TO "A" OPTION			PCN:								
4	DLS	03/10/06	MODIFIED CONNECTION DESCRIPTIONS AND CORRECTED FONT OF MODEL NUMBER TABLE			MATERIAL:			DRAWN BY: DLS DATE: 01/12/06 DESIGNER: DATE:					
3	NAL	03/08/06	ADDED 13.5 AND 18KW HEATERS						DESCRIPTION: SALES DRAWING; TIH NEW STYLE					
2	HJB	3/3/06	CORRECTED STD I/O ORIENTATION						SIZE: B SCALE: NONE PAGE: 1 OF 1 DRAWING No. 54-0011-5					
REV.	BY	DATE	DESCRIPTION OF CHANGE											

THIS DRAWING IS THE PROPERTY OF PROCESS TECHNOLOGY. IT CONTAINS CONFIDENTIAL INFORMATION AND MAY NOT BE REPRODUCED IN ANY WAY WITHOUT THE PERMISSION OF PROCESS TECHNOLOGY